

VARES-LOOP

TRC-800 A RINGBUS CONTROLLER

R·C·S[®]
AUDIO-SYSTEMS



Compatible with:

VARES-1500

VARES-2000

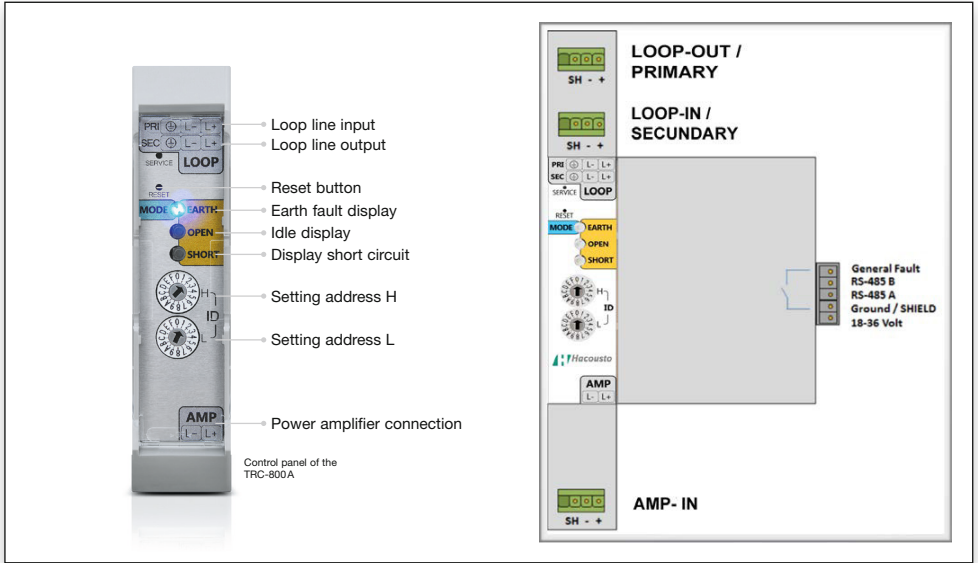
VARES-3000

The VARES-LOOP Ringbus Controller (TRC-800A) is the heart of the Loop system. This device drives up to 200 TRT-200A's over a dual-core cable. A single Booster can pass 800W of audio signal from an amplifier and injects at the same time DC to the loop for powering and managing FIM modules. One amplifier channel can be split into multiple Booster in parallel, creating multi-loop with individual surveillance for multi-zone paging applications.

The housing clicks on a DIN-rail that provides DC-power and accommodate for the RS485 data connection and General-Fault contact to a maximum of 32-LDB's on a single DIN-rail. Front buttons and indicators allow for quick access to the various functions and indications of the Loopdrive system.

OPERATING INSTRUCTIONS – QUICK GUIDE

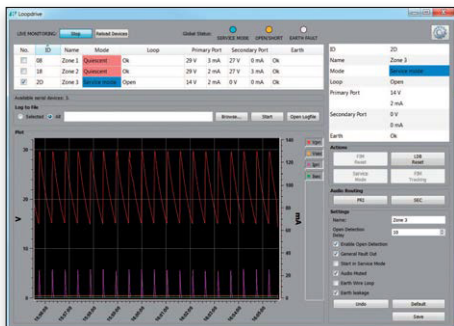
- ENGLISH



During fault status, the VARES-LOOP Controller is feeding both loop-branches simultaneously and the fault is indicated by the status LED's on both TRT's and TRC. The LED indicator(s) on the Controller are flashing with intervals to indicate the error.

The TRT-200A restores the faulty partition of the Loop-branch-lines to normal condition when the short or open circuit condition is removed and a general reset command is given by pressing the RESET button on the corresponding Controller. Please refer to the User and Installation manual for entailed information on the various indications and functions.

SNIFFER is a comprehensive Graphical User Interface (GUI) that let you automate the commissioning and installation of a VARES-LOOP system with up to 256 LDB-units over a single RS485 connection.



Sniffer is not only visualising the various commissioning procedures but also provide streamlined methods for fault-finding and device allocating without the directneed for a digital communication protocol over the 2-wire audio line's. It fulfils the user's needs and expectations by far.

Please refer to the PC-application manual for detailed information.

Technical data		TRC-800A
Electrical		
DC Power supply	18 - 36 VDC, nominal 24 VDC	
DC Power consumption		
Idle current @200 FIM's (Full load)	100 mA continuous	
Max. power consumption	2,4W	
AMP input (100V audio)		
Max. AC voltage	max. cont. 100Vrms	
Max. AC current	max. cont. 8A	
AC Frequency range	40Hz - 20kHz (-3dB)	
LOOP output		
AC	same as AMP input	
DC voltage	30V	
DC current	max. cont. 130mA	
Maximum total LOOP load	800 W	
Wiring	2-wire. Max. 2,5mm ² / Max. Loop length: 1000m	
Grounding	optional earth loop through third connection pin	
Loop relay contact rating	max. 250VAC / 8A (Dual state type)	
Bus address range	00 - FF (0-255) / max. 32 on single DIN-rail bar	
Detection - LOOP	Short, wire-to-wire / Open / Earth leakage	
Maximum # TRT-200A connected	200	
Mechanical		
Housing	Bopla Combinorm-Connect - DIN rail version - IP30	
Dimensions (WxHxD)	17.5 x 114.5 x 99 mm	
Ordering information. Part No.		
TRC-800A	1x IP30 housing with PCB 1x 5-pole DIN-rail bus connector / 1x 5-pole screw connector for DIN-rail bus / 2x 3-pole screw connector / 1x 2-pole screw connector	
Certification and Approvals		
Complies with	EN54-16:2008 / NEN2575-2	
EMC immunity	EN50130-4:2011 / 152240002/AA/00	