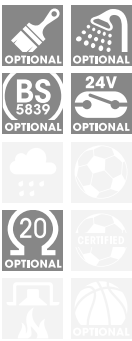


CABINET SPEAKER (with 100V-transformer)

RCS



without control

6W Adaptions 1,5/3/6 W
10W Adaptions 2,5/5/10 W

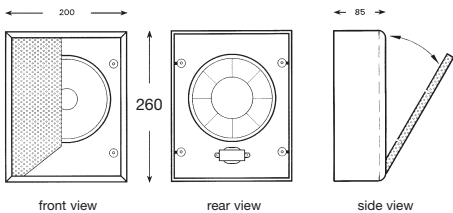


Description

This cabinet speaker is made of coated MDF wood and is due to its thought-out construction absolutely swinging- and boom-free. In connection with the broadband high performance chassis an excellent speech and music playback can be reached. The design is modern, decent and is commented upon in a positive manner by architects. The rear panel and the comfortable spring snatch lock make the assembly substantially easier.

Please consider the following features:

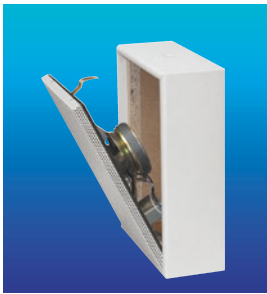
- The installed 100V-transformer enables the tapping to 1/1, 1/2 and 1/4 performance in each case.
- Drilled holes in the rear panel allow a horizontal or vertical attachment of the speakers.
- The models BCH-406R/410 R are delivered with an installed volume control.
- The speakers are available in all RAL colours on request.



Cabinet Speaker 6 W **BCH-406**
with 100V-transformer
Cabinet Speaker 10 W **BCH-410**
with 100V-transformer

Technical data	BCH-406 (R)	BCH-410 (R)
Load rating (Music capacity)	6 (15) W	10 (15) W
Transformer tapings at 100 V	6 / 3 / 1,5 W	10 / 5 / 2,5 W
Frequency range	120 – 16.000 Hz	120 – 16.000 Hz
Sound pressure at 1W/1m	96 dB	96 dB
Sound pressure SPL Pmax/1m	106 db @ 5 kHz	107 dB @ 5 kHz
Angle of refl. beam 1/4/8 kHz:	90°/55°/40°	90°/55°/40°
Speaker Ø (mm)/impedance	165 mm/8 ohms	165 mm/8 ohms
Dimensions, HxWxD (mm)	260 x 200 x 85	
Weight	approx. 1,6 kg	approx. 1,7 kg
Colour corpus / grille	alpinewhite/white	

★



Easy assembly due to comfortable spring snatch lock

Models with built-in volume control

These cabinet speakers are also available with a fitted volume control (on the lower ohm side). The control is positioned underneath (lateral, if speaker is mounted horizontally). The control axis can be adjusted with a screwdriver after taking off the cover cap. It is possible to operate the selector by using the enclosed knob. This only has to be pushed on the axis.

Cabinet Speaker 6 W **BCH-406 R**
with 100V-transformer and control
Cabinet Speaker 10 W **BCH-410 R**
with 100V-transformer and control