

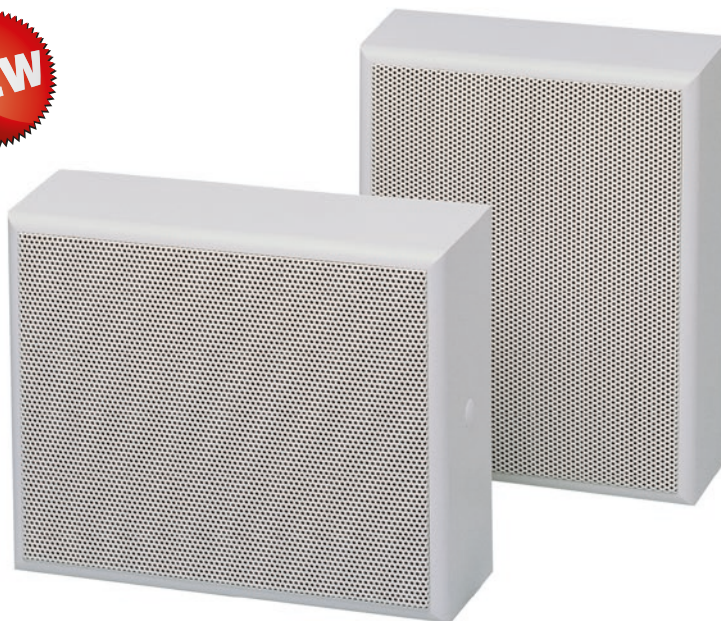
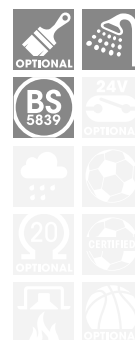
100V

6W Adaptors 1,5/3/6W



Certificat No.  
1438-CPR-0615

Under fire  
regulation



## Description

**This loudspeaker is tested by a notified product certification authority and certified to EN 54-24:2008.**

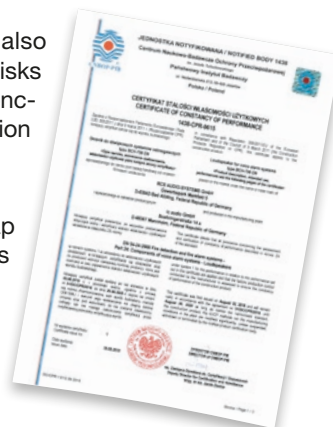
The 6W speaker is equipped with a 165mm broadband speaker chassis and a 100V transformer with three power adjustments. The high-density, impact-resistant and low-resonance housing enables optimal sound.

The speaker is therefore ideal for use in voice alarm systems and the playback of attention and alarm signals.

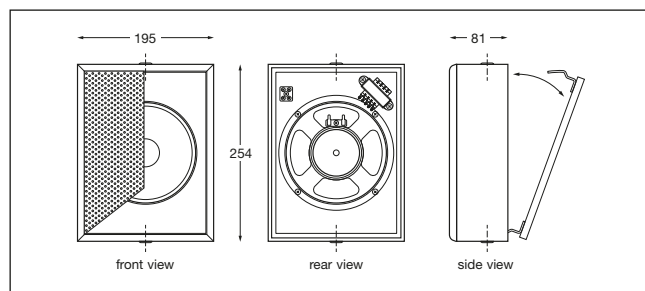
Please consider the following features:

- The housing is made of coated, impact-resistant housing MDF wood and is absolutely design-related vibration and drone free.
- Broadband, high-performance speaker chassis with integrated tweeter cone.
- For added reliability, the integrated 2-pole ceramic terminal and thermal fuse, as well the moisture impregnation of the loudspeaker chassis.

- The loudspeaker is also protected against the risks of environmental influences with its high protection class IP 54.
- The proven spring snap on the back wall ensures fast wall mounting.
- A sturdy perforated steel grille cover ensures continuous stability.
- The loudspeaker is also compliant with **British Standard BS 5839, Part 8.**



Technical data	BC-706 EN
Load rating (program)	6 (15) W
Transformer tapings at 100V	6 W - 3 W - 1,5 W
Frequency range (±10dB)	175 - 23.500 Hz
Sound pressure at 1 W/1 m	91,6 dB
Sound pressure SPL Pmax/1 m	96,3 dB
Angle of refl. beam 1kHz	160° horizontal / 160° vertical
Speaker and impedance	165 mm / 8 ohms
Protection class	IP54
Dimensions, HxWxD	254 x 195 x 81 mm
Weight	1,95 kg
Colour corpus / grille	white



## Model designation

**Alarming Cabinet-Speaker ..... BCH-706 EN**  
6 W, with 100V-transformer, white