

ACTIVE CEILING SPEAKER SYSTEM

RCS



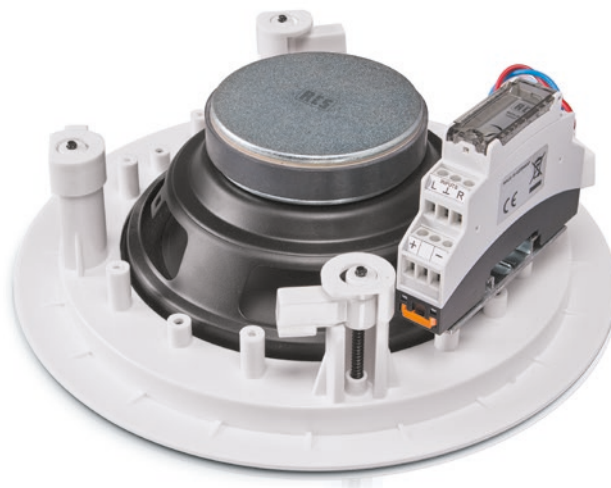
100 V

2-Way-System

with coaxial chassis

PASSI

ACTIVE



Description

The new active speaker system RCA-220C allows a very high-quality, especially low-priced 2-way PA. Set consists of 2 coaxial ceiling speaker and an amplifier module with a power range of 2x 20 W. The used stereo amplifier is performed in Class-D technology.

The performance amplifying made directly at the speaker. This guarantees in all frequency ranges high dynamics and reproduction quality and fidelity without distortion.

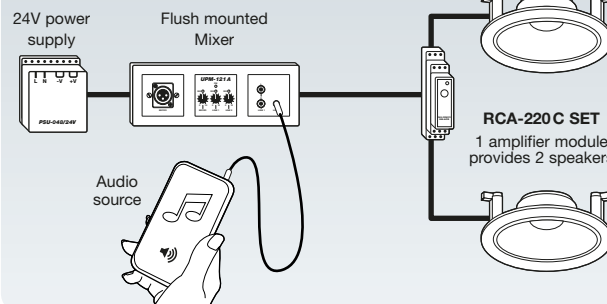
The optionally available mixer UPM-121A completes the set. With this mixer all signals can be fed, for example, or laptops, CD / MP3 players mobile phones.

Please consider the following features:

- Cost effective solution, ideal for schools and presentation rooms.
- Loudspeaker cabinets in all RAL colors available on request.
- Easy installation and installation costs.

Technical data	RCA-220 C
Output power at 24V	2x 20/10 W
Frequency range -3dB	45 – 20.000 Hz
Audio inputs	unbalanced
Protection circuits	thermal, short circuit, reverse polarity
Rotary switch (4 gain stages)	20dB, 26dB, 32dB, 36dB
Input level	0dB, -6dB, -12dB, -16dB
Operating voltage	10-28 V
Current consumption at 24V/max.	45mA/2A
Connections	screw terminals up to 2,5 mm²
Speaker Ø and Impedance	165 / 8 ohms, 2-way coaxial chassis
Dimensions / installation depth	Ø 226 mm, 100 mm
Hole cutout	Ø 200 mm

Operating principle of the system



Model designations

Active-Speaker-Set, 2x 20/10W **RCA-220 C**
2 Ceiling speakers with integrated amplifier module

Accessories:

3-Channel Flush-Mounting Mixer **UPM-121 A**
Power Supply, 24V **PSU-048/24**