

100V

PASSIVE

ACTIVE

6W Adaptions
1,5/3/6W

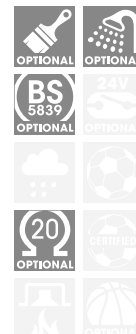
10W Adaptions
2,5/5/10W

broadband chassis

10W Adaptions
2,5/5/10W

20W Adaptions
5/10/20W

with coaxial chassis



Description

The ceiling and wall construction speakers of the SCS series present themselves in a new, responding optic. The form adapts outstandingly to almost all premises.

Particularly in buildings, in which a suspended ceiling is not intended, the complete metal speaker is the solution. Of course it can be used due to its method of construction also as wall speakers.

If desired, it is available in all RAL colours.

Please consider the following features:

- Speaker in complete metal execution.
- Wide-band chassis for excellent speech and music reproduction.
- Simple assembling.
- Optionally in humid room version available.

★

Technical data	SCS-106	SCS-110
Load rating (Music power)	6 (15) W	10 (15) W
Transformer tappings at 100V	6 / 3 / 1,5 W	10 / 5 / 2,5 W
Frequency range	155 – 20.000 Hz	155 – 20.000 Hz
Sound pressure at 1W/1m	95,5 dB	95,5 dB
Sound pressure SPL Pmax/1m	105 dB @8kHz	106 dB @1,2kHz
Angle of refl. beam (-6dB) 1/4/8 kHz	100°/ 90°/ 25°	100°/ 90°/ 30°
Speaker Ø (mm) / Impedance	165 mm/ 8 ohms	
Dimensions Ø / Height	266 mm; 80 mm	
Weight	approx. 1,3 kg	approx. 1,3 kg

Ceiling Speaker, 6 W **SCS-106**
with 100V-transformer, white

Ceiling Speaker, 10 W **SCS-110**
with 100V-transformer, white

Description

The models SCS-110C and SCS-120C correspond to the accompanying model series in design, mounting method and design.

They are equipped with a high-quality 2-way coaxial chassis that in reference to sound pressure and fidelity fulfills also professional requirements.

★

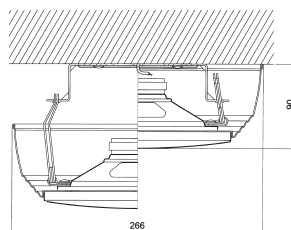


Figure shows 2-way-coaxial-chassis for the models SCS-110C and SCS-120C.

Technical data	SCS-110C	SCS-120C
Load rating (Music power)	10 (40) W	20 (40) W
Transformer tappings at 100V	10 / 5 / 2,5 W	20 / 10 / 5 W
Frequency range	170 – 17.500 Hz	160 – 20.000 Hz
Sound pressure at 1W/1m	92 dB	92 dB
Sound pressure SPL Pmax/1m	104 dB @300Hz	107 dB @300Hz
Angle of refl. beam (-6dB) 1/4/8 kHz	110°/ 60°/ 44°	100°/ 55°/ 50°
Speaker Ø (mm) / Impedance	165 mm/ 8 ohms	
Dimensions Ø / Height	266 mm; 80 mm	
Weight	approx. 1,5 kg	approx. 1,5 kg

Ceiling Speaker, 10W **SCS-110C**
with 100V-transformer, white

Ceiling Speaker, 20W **SCS-120C**
with 100V-transformer, white